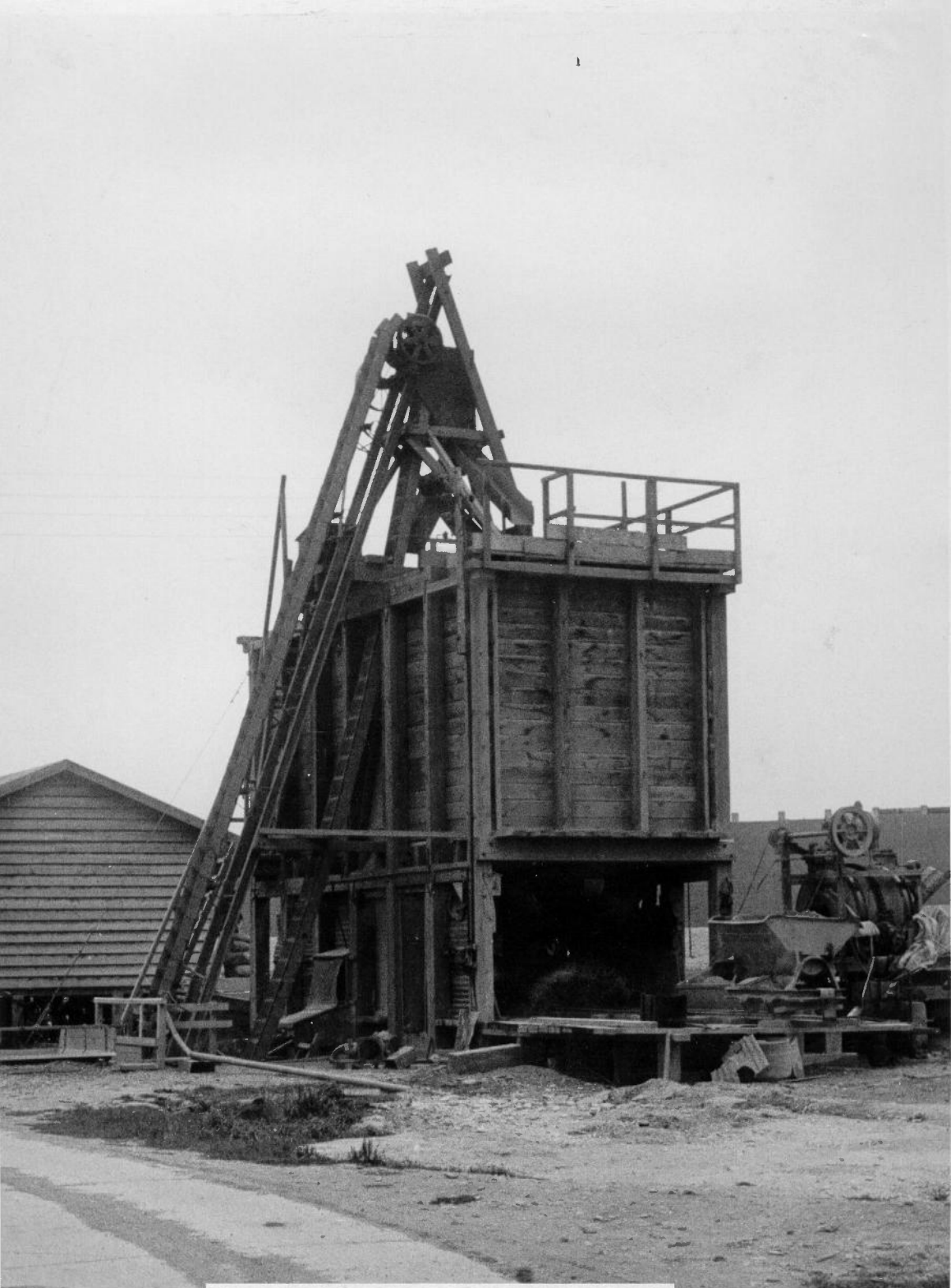




Wave Wall on Dam nearly complete. Men are camouflaging Dam with paint. 1940.



Dam nearly complete, showing concrete slabs on Upstream face & foundation of Wave Wall. 1940.



Gravel Elevator & Grader. 1940



Tunnel underneath Stewarts & Lloyds sidings in Works.
The 20" Pipe Line runs through. 1940.



Pitching for asphalt path for top of
Dam, 1940.



Bridge to Valve Tower.



Heavy growth of Grass.first year after sowing,1939.On Bottom half of Dam,bad take on top half.March,1940.



General View of Tail Bay, with Engineer's Yard.
1940.